



Model #AGM-26

Cooling

Temperature Range	33°F-40°F
Refrigerant	R290
Max. Ambient Temperature	90°F
Defrosting	Automatic
Temperature Controller	Digital
Horsepower	1/3

Electrical

Voltage	115
Amps	2.5
Hz	60
Phase	1
Plug Type	NEMA-5-15P
Electrical Cord Length	98

Standard Features – Glass Merchandiser Refrigerated Model #AGM-26

- Single self-closing, anti-fog glass door
- Interior LED lighting
- (4) epoxy-coated steel shelves included
- Simple installation with no plumbing
- Easily accessible condenser coil for cleaning and easy service access
- Foamed-in-place polyurethane insulation
- Bottom mount condensing unit
- Removable door gasket for easy cleaning
- Automatic defrosting
- Stainless steel floor
- Copper evaporator
- Equipped with Casters
- Eco-friendly R290 hydrocarbon refrigerant
- ETL listed. Conforms to UL STD. 471, Certified to CSA STD. C22. 2No.120
- Conforms to NSF/ANSI STD. 7

Construction

Exterior Material	Powder Coated Cold Rolled Steel
Interior Material	Painted Aluminum
Door Type	Glass Swing
Insulation Material	Foamed-In-Place Polyurethane
Shelf Size	(4) 20.5" x 15.9"
Shelf Material	Epoxy Coated Steel
Shelf Load Capacity	88 lbs.

Dimensions

Exterior Dimensions	27.2"W x 25.6" x 84.6"H
Interior Dimensions	21.3"W x 21.3"D x 55.1"H
Shipping Dimensions	27-1/2"W x 24-3/4"D x 85"H
Net Volume	12.9 cu. ft.
Net Weight	265 lbs.
Gross Weight	320 lbs.

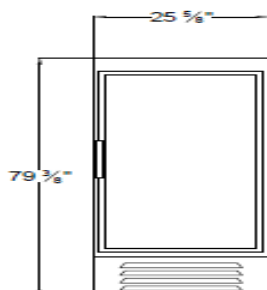


Parts & Labor

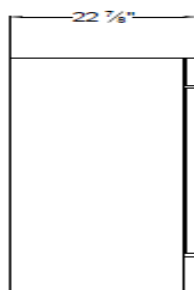
Compressor

PLAN VIEW

Front View



Side View



Top View

