



Model #AST-60M

Standard Features - Mega Top Salad Prep Table #AST-60M

- Sleek, stainless steel interior and exterior
- Eco-friendly R290 hydrocarbon refrigerant
- Top holds up to (24) 1/6 size, 6" deep food pans (sold separately)
- Full length, 8" deep cutting board, 3/4" thick
- Insulated lid helps maintain safe product temperatures
- Double self-closing swing doors with recessed handles
- Equipped with Casters
- Pan rail is air cooled from the bottom
- 18.4 cu. ft.
- 115V, 1/2hp
- ETL Safety & Sanitation Listed

Construction

Exterior Material	430 Stainless Steel
Interior Material	430 Stainless Steel
Insulation Material	Foamed-In-Place Polyurethane
Shelf Size	(2) 27.4"W x 17.1"D
Shelf Material	Epoxy-Coated Steel
Shelf Load Capacity	88 lbs.

Cooling

Temperature Range	33°F - 40°F
Refrigerant	R290
Max. Ambient Temperature	90°F
Defrosting	Automatic
Temperature Controller	Digital
Horsepower	1/2

Electrical

Voltage	115
Amps	5.4
Hz	60
Phase	1
Plug Type	NEMA-5-15P
Electrical Cord Length	96"

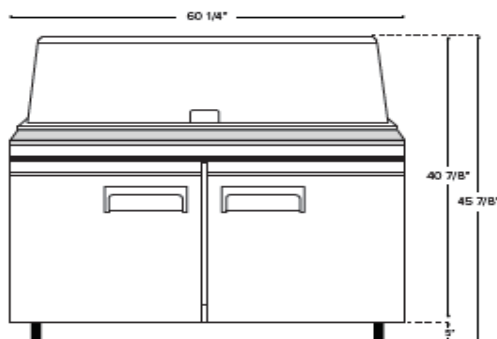
Dimensions

Exterior Dimensions	60.2"W x 34"D x 45.9"H
Interior Dimensions	56.5"W x 19.8"D x 23.5"H
Shipping Dimensions	64-1/2"W x 39-1/4"D x 49"H
Working Height	35-1/4"
Overall Height (Lid Open)	51-3/4"
Cutting Board Dimensions	60-1/8"W x 8"D x 3/4"H
Net Volume	18.4 cu. ft.
Net Weight	385 lbs.
Gross Weight	427 lbs.
Pan Capacity	(24) 1/6 Size

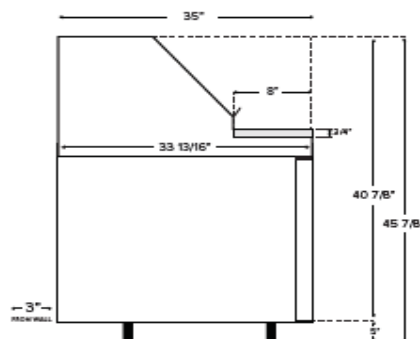


PLAN VIEW

Front View



Side View



Top View

